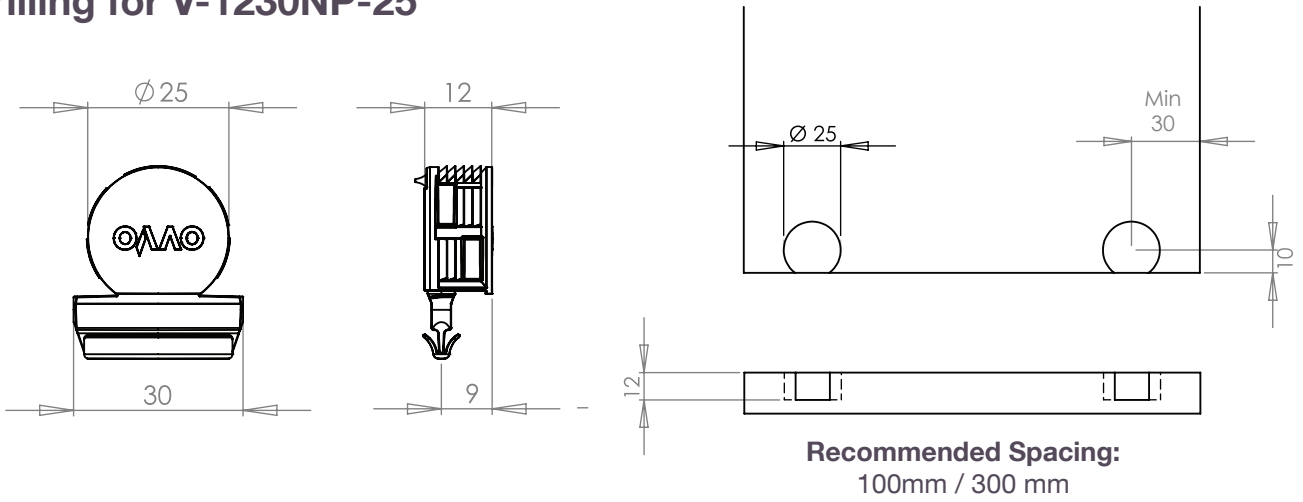


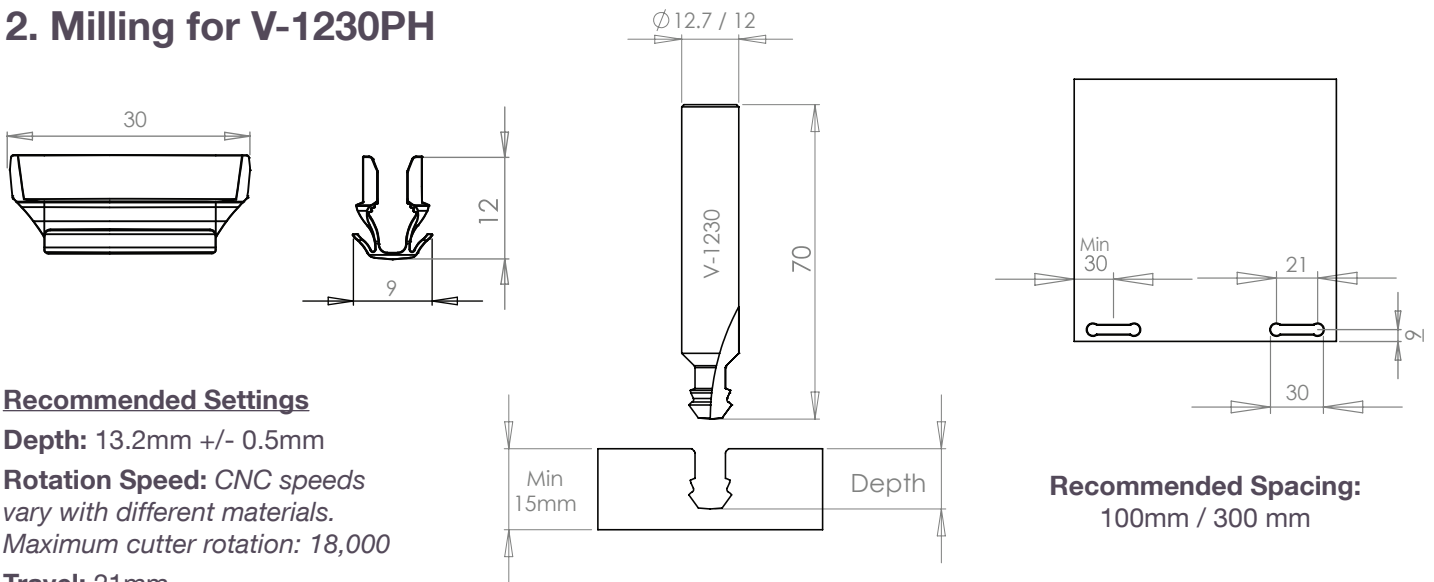
V-1230NP-25 + V-1230PH

Permanent Instructions

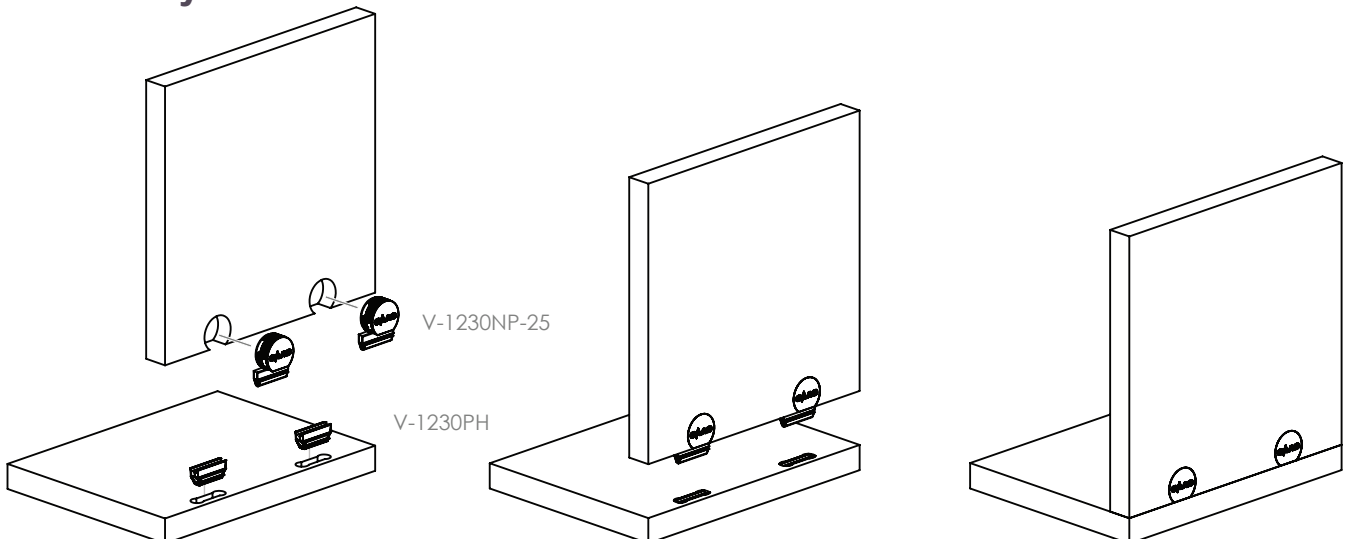
1. Drilling for V-1230NP-25

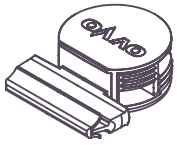


2. Milling for V-1230PH



3. Assembly

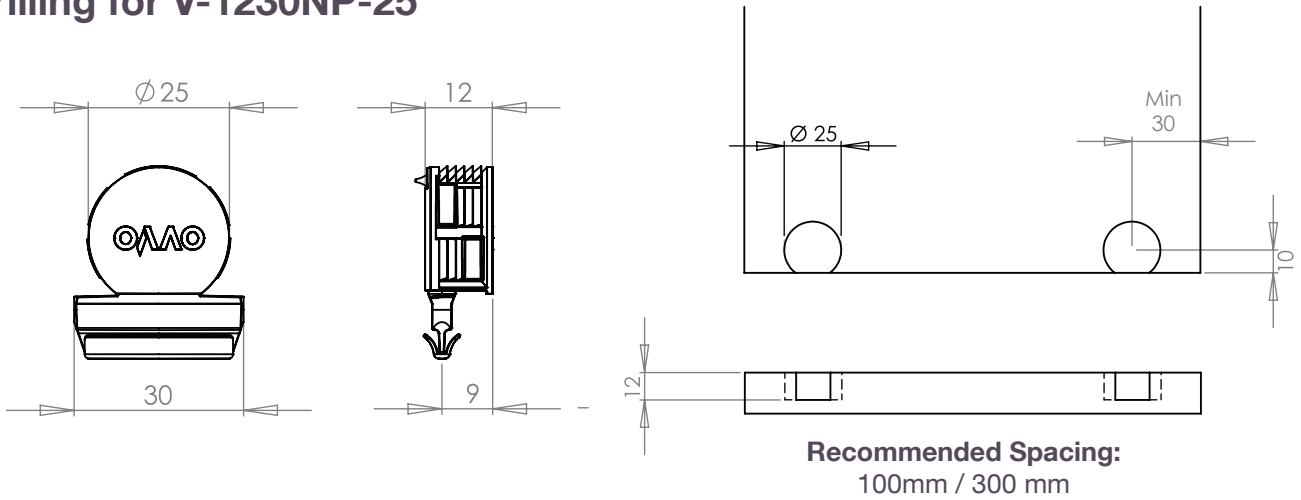




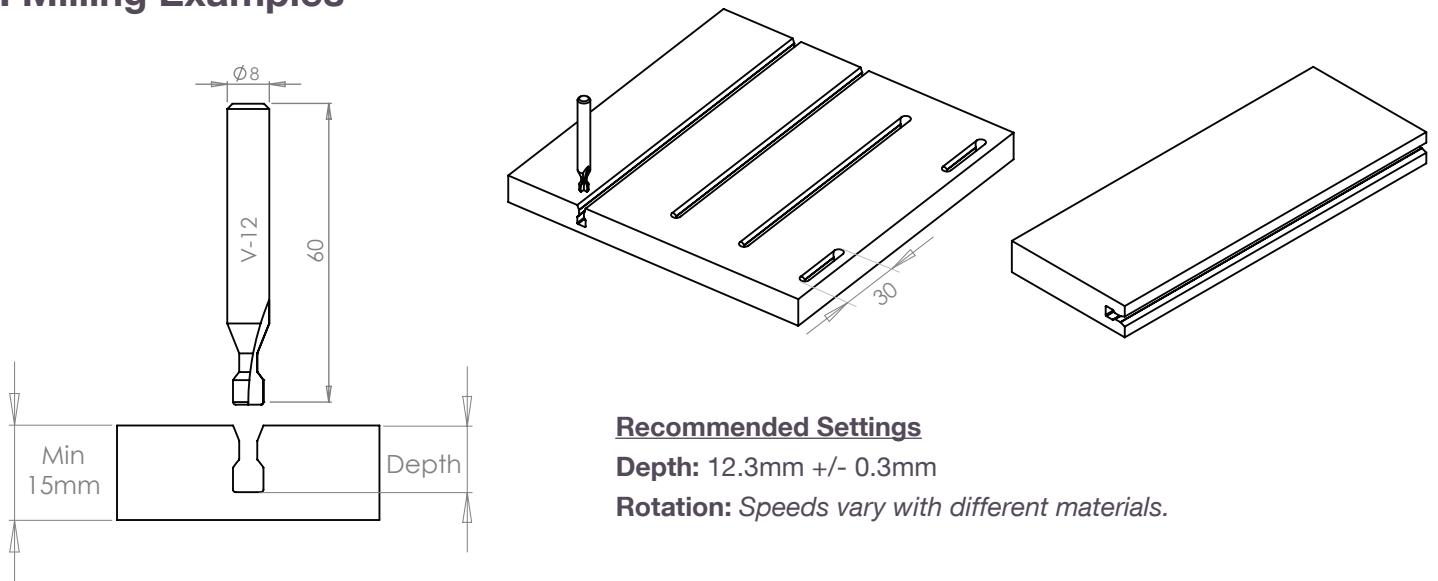
V-1230NP-25

Instructions

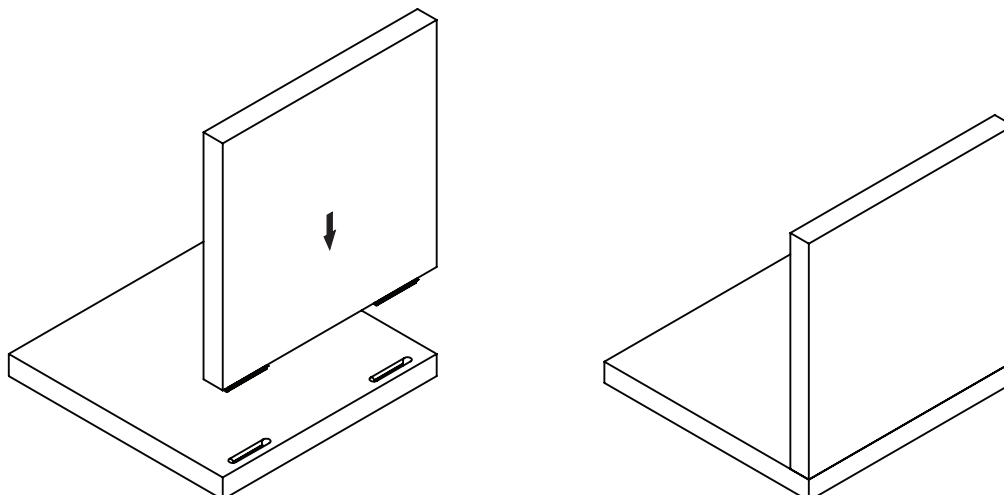
1. Drilling for V-1230NP-25



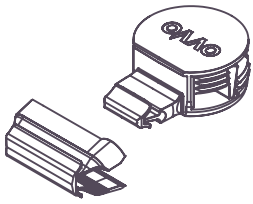
2. Milling Examples



3. Assembly



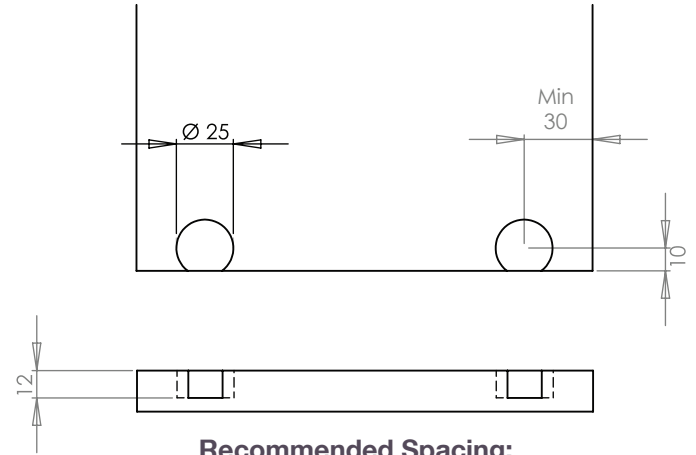
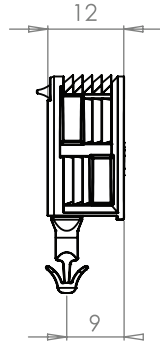
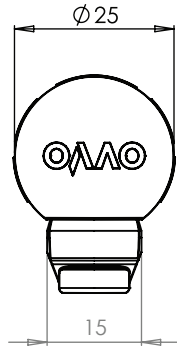
Can be used
with glue



V-1230NR-25 + V-1230RH

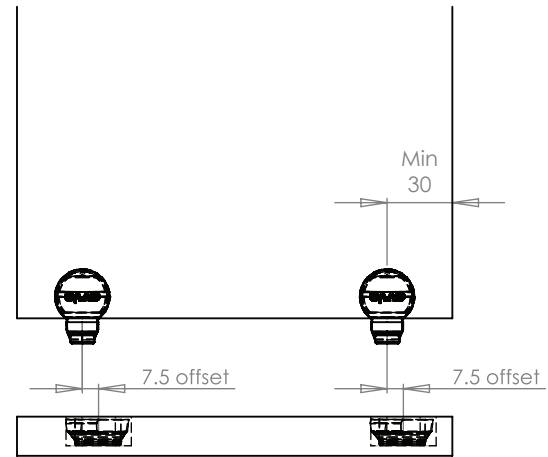
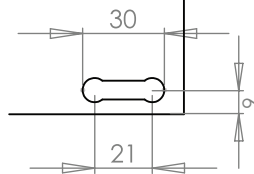
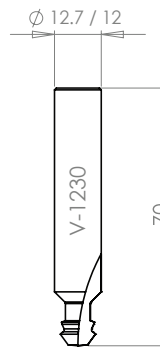
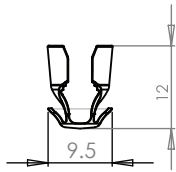
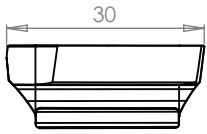
Releasable Instructions

1. Drilling for V-1230NR-25



Recommended Spacing:
100mm / 300 mm

2. Milling for V-1230RH



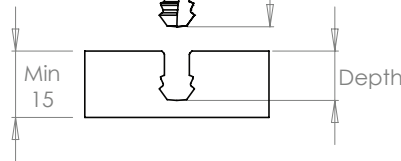
Recommended Settings

Depth: 13.2mm +/- 0.5mm

Rotation Speed: CNC speeds vary with different materials.

Maximum cutter rotation: 18,000

Travel: 21mm



3. Assembly

