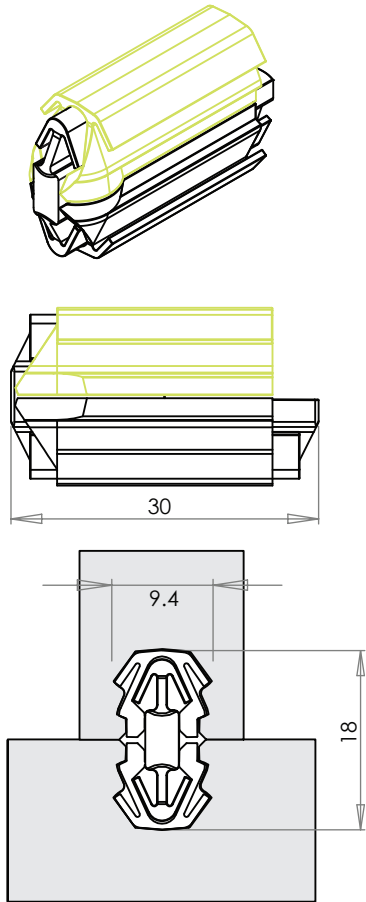


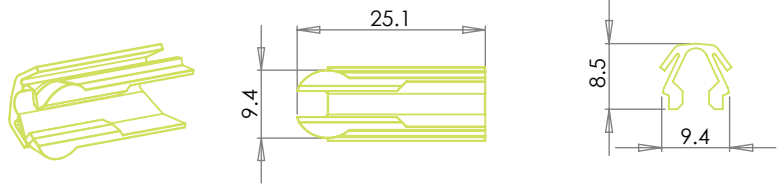
# OVVO® V Connection System

## V-0930 Releasable Specifications

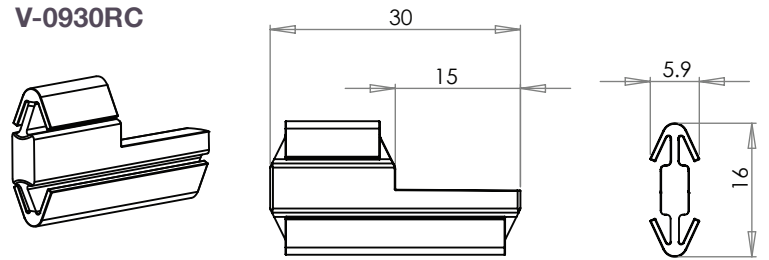
### V-0930 Releasable



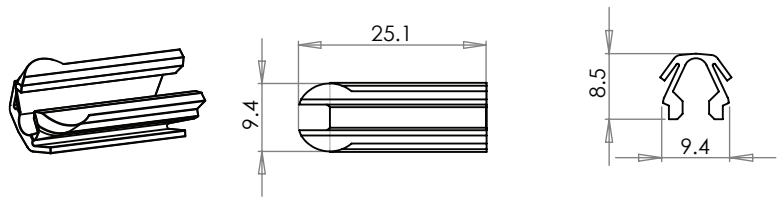
### V-0930RH



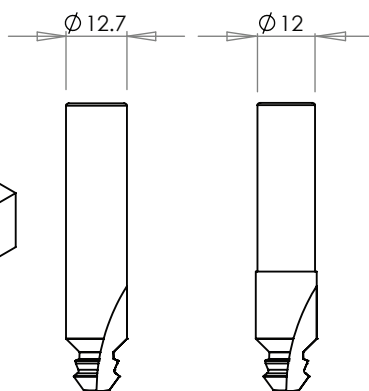
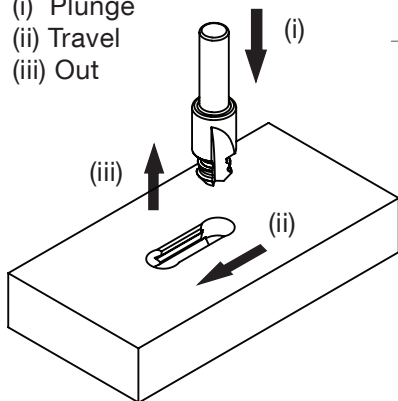
### V-0930RC



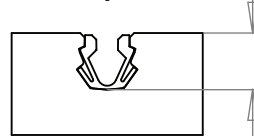
### V-0930PH



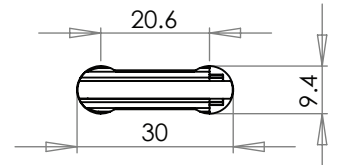
- (i) Plunge
- (ii) Travel
- (iii) Out



#### Depth



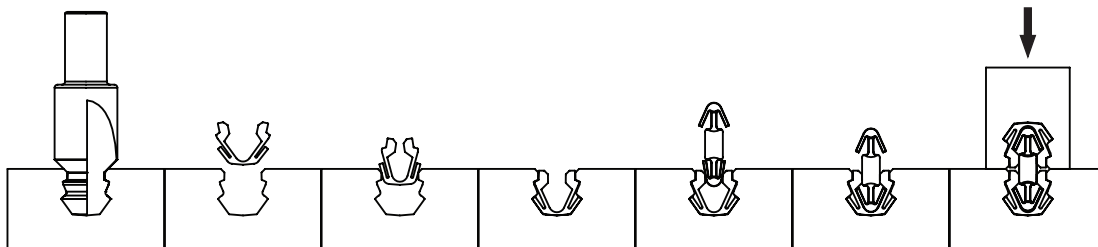
#### Travel



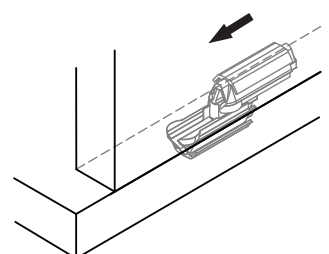
**Depth Tolerances:** 9.5mm, +/- 0.5mm  
**Travel (Centre to Centre):** 20.6mm  
**Out to Out:** 30mm

*CNC speeds vary with different materials.  
 Maximum cutter rotation: 18,000*

## How it works



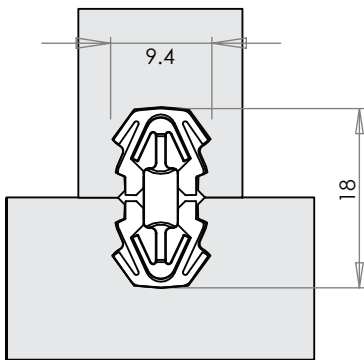
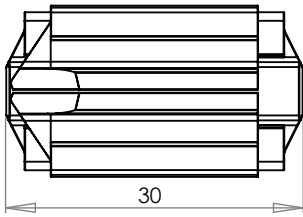
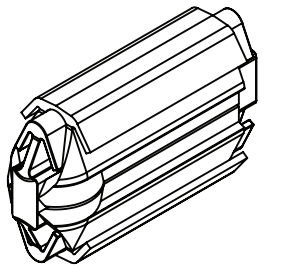
## Simply push or slide to connect



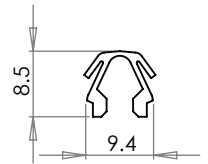
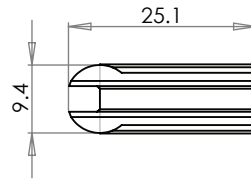
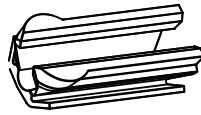
# OVVO® V Connection System

## V-0930 Permanent Specifications

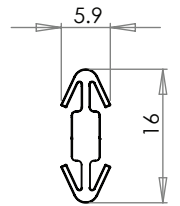
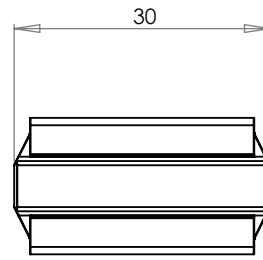
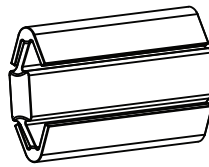
### V-0930 Permanent



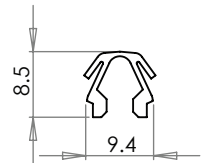
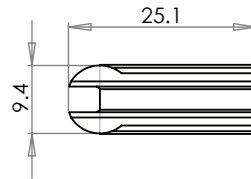
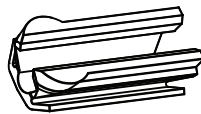
### V-0930PH



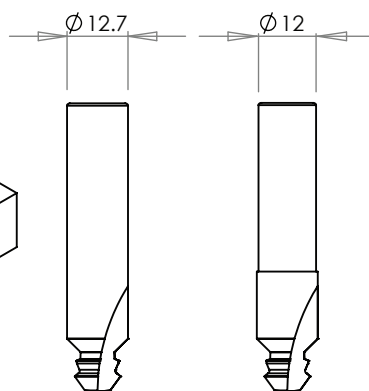
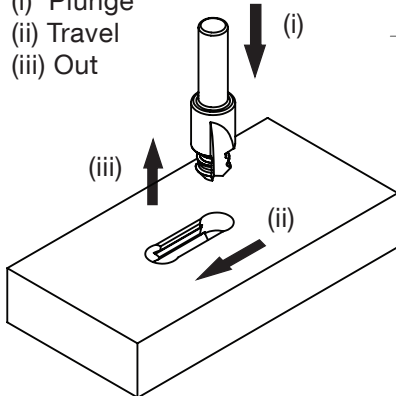
### V-0930PC



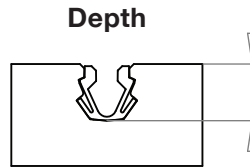
### V-0930PH



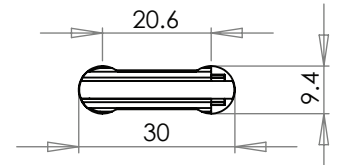
- (i) Plunge
- (ii) Travel
- (iii) Out



#### Depth



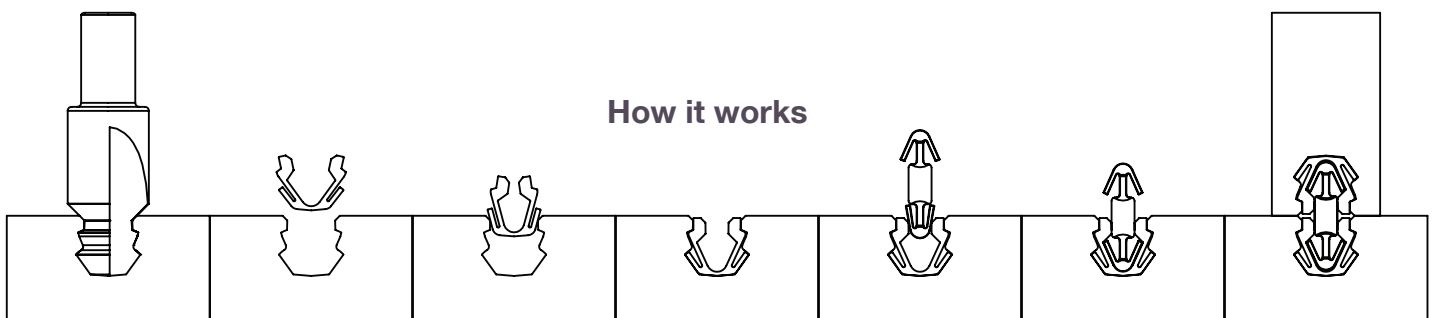
#### Travel



**Depth Tolerances:** 9.5mm, +/- 0.5mm  
**Travel (Centre to Centre):** 20.6mm  
**Out to Out:** 30mm

*CNC speeds vary with different materials.  
 Maximum cutter rotation: 18,000*

### How it works



# V-0930 Recommended Minimum Board Depth

Recommended minimum board depth or thickness values for the V-0930 will change depending on both the substrate material used as well as the joint angle.



Fig 1



Fig 2

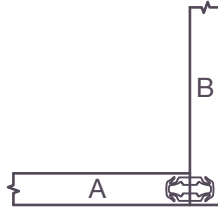


Fig 3

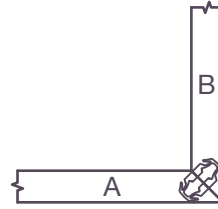


Fig 4

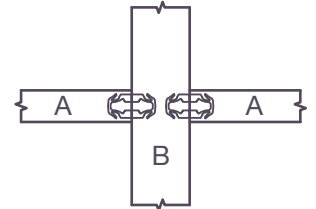


Fig 5

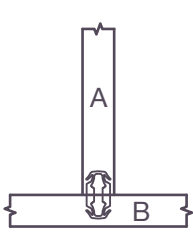


Fig 6

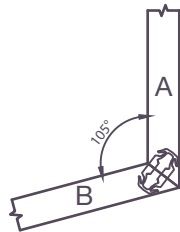


Fig 7

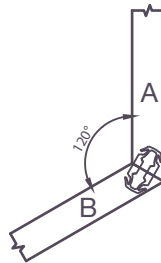


Fig 8

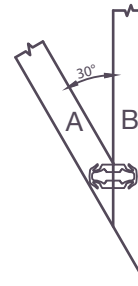


Fig 9

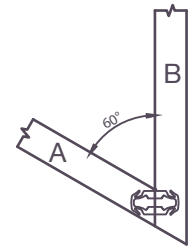


Fig 10

Minimum recommended measurements shown below are categorized according to two distinct groups of board material which share broadly similar connector retention properties.

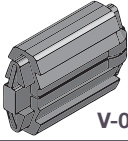
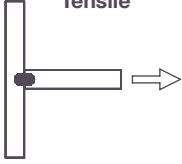
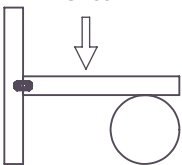
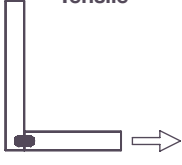
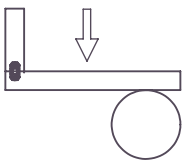
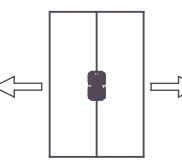
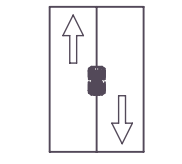
|        | HPL, Composite, Solid Surface, Hardwoods, Birch Plywood |      |
|--------|---|------|
|        | A   | B    |
| Fig 1  | 12mm  | 12mm |
| Fig 2  | 12mm  | 12mm |
| Fig 3  | 12mm  | 12mm |
| Fig 4  | 14mm  | 14mm |
| Fig 5  | 12mm  | 19mm |
| Fig 6  | 12mm  | 12mm |
| Fig 7  | 12mm  | 12mm |
| Fig 8  | 12mm  | 12mm |
| Fig 9  | 12mm  | 12mm |
| Fig 10 | 12mm  | 12mm |

|        | Particle/Chipboard, Softwoods, MDF |      |
|--------|------------------------------------|------|
|        | A                                  | B    |
| Fig 1  | 15mm                               | 15mm |
| Fig 2  | 12mm                               | 12mm |
| Fig 3  | 16mm                               | 12mm |
| Fig 4  | 15mm                               | 15mm |
| Fig 5  | 15mm                               | 19mm |
| Fig 6  | 15mm                               | 12mm |
| Fig 7  | 15mm                               | 15mm |
| Fig 8  | 15mm                               | 15mm |
| Fig 9  | 15mm                               | 15mm |
| Fig 10 | 15mm                               | 15mm |

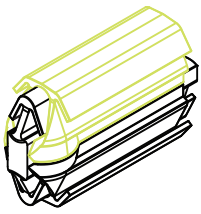
These are guidelines only and OVVO® recommends trial connections be made before going into full production.

# OVVO® V Connection System

## V-0930 Shear & Tensile

| <br>V-0930                                  | 18mm Chipboard |            | 18mm MDF  |            | 18mm Plywood |            | 12mm Plywood |            | 12mm HPL  |            |
|--|----------------|------------|-----------|------------|--------------|------------|--------------|------------|-----------|------------|
|  | Permanent      | Releasable | Permanent | Releasable | Permanent    | Releasable | Permanent    | Releasable | Permanent | Releasable |
| <b>Tensile</b><br><br>2 x V-0930 per test   | 65kg           | 52.5kg     | 67.5kg    | 42.5kg     | 140kg        | 82.5kg     | 75kg         | 57.5kg     | -         | -          |
| <b>Shear</b><br><br>2 x V-0930 per test     | 150kg          | 130kg      | 180kg     | 130kg      | 475kg        | 325kg      | 175kg        | 110kg      | -         | -          |
| <b>Tensile</b><br><br>2 x V-0930 per test  | 40kg           | 40kg       | -         | -          | -            | -          | -            | -          | -         | -          |
| <b>Shear</b><br><br>2 x V-0930 per test   | 85kg           | 85kg       | -         | -          | -            | -          | -            | -          | -         | -          |
| <b>Tensile</b><br><br>1 x V-0930 per test | 50kg           | 30kg       | 50kg      | 35kg       | -            | -          | 85kg         | 45kg       | 100kg     | 50kg       |
| <b>Shear</b><br><br>1 x V-0930 per test   | 105kg          | 70kg       | 137.5kg   | 90kg       | -            | -          | 170kg        | 105kg      | 230kg     | 140kg      |

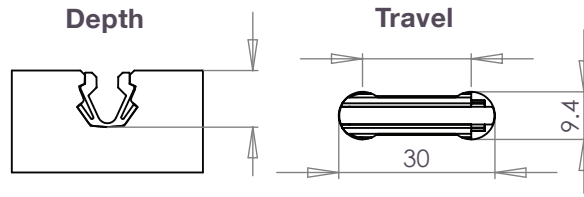
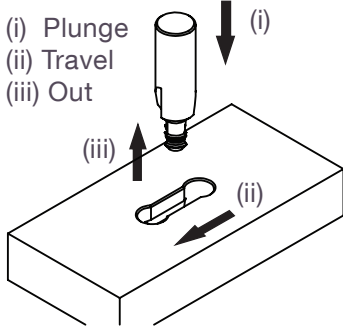




# V-0930

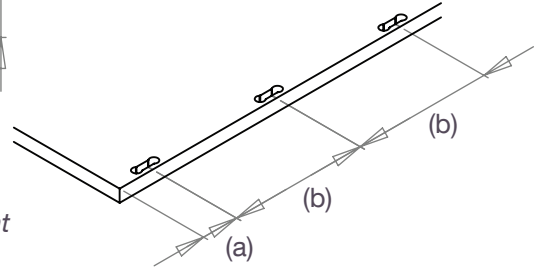
## Releasable Instructions

### 1. Milling



#### Recommended Spacing

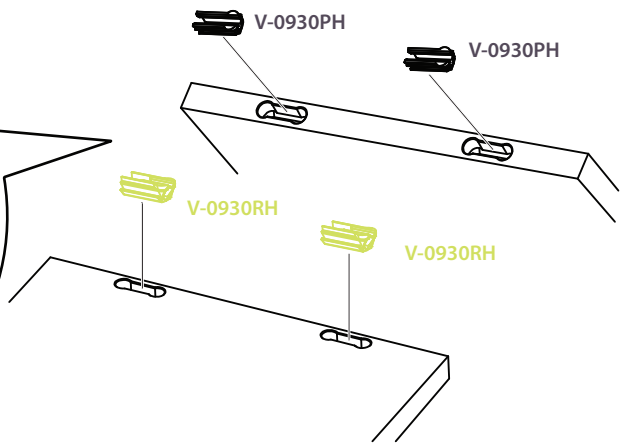
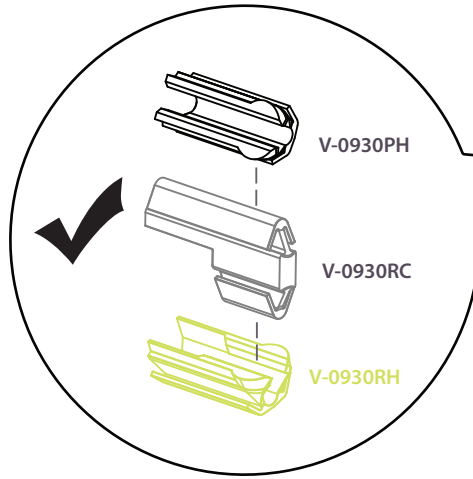
- (a): 35mm to 80mm
- (b): 100mm to 250mm



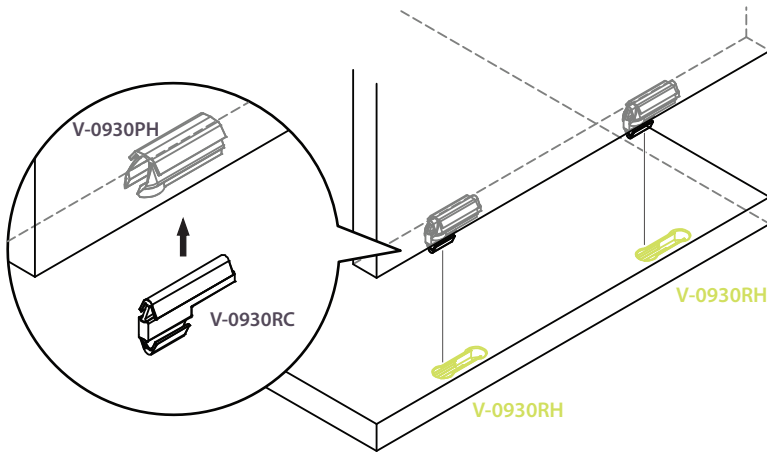
#### Recommended Settings

**Depth:** 9.5mm, +/- 0.5mm  
**Travel Centre to Centre:** 20.6mm  
**Rotation Speed:** CNC speeds vary with different materials. Maximum cutter rotation: 18,000

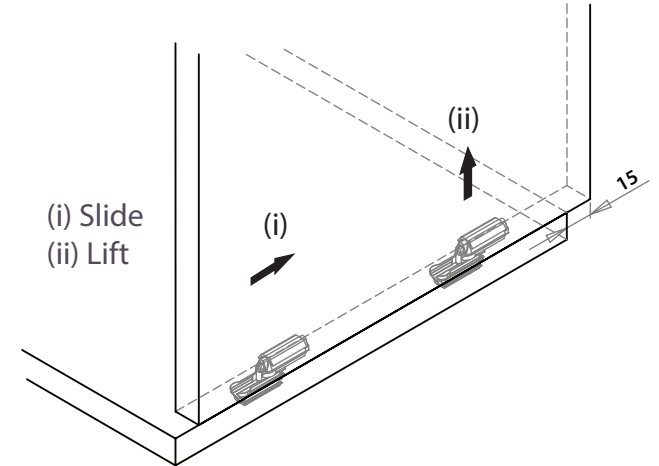
### 2. Housing



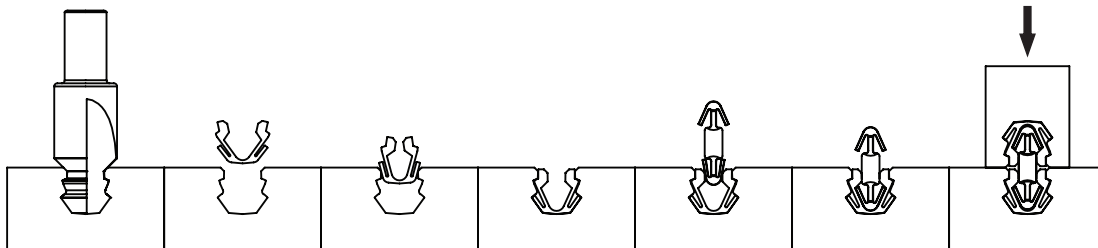
### 3. Assembly - Simply push or slide to connect



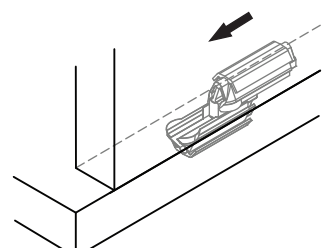
### 4. Release

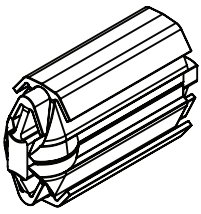


### How it works



### Simply push or slide to connect

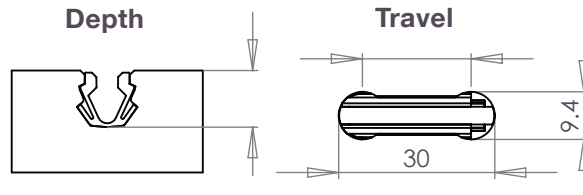
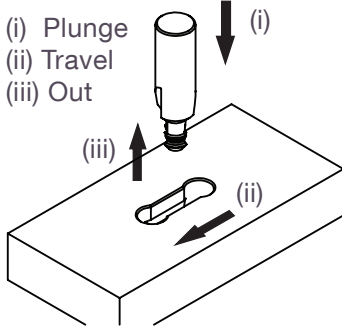




# V-0930

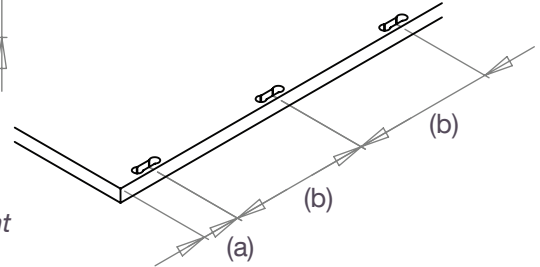
## Permanent Instructions

### 1. Milling



#### Recommended Spacing

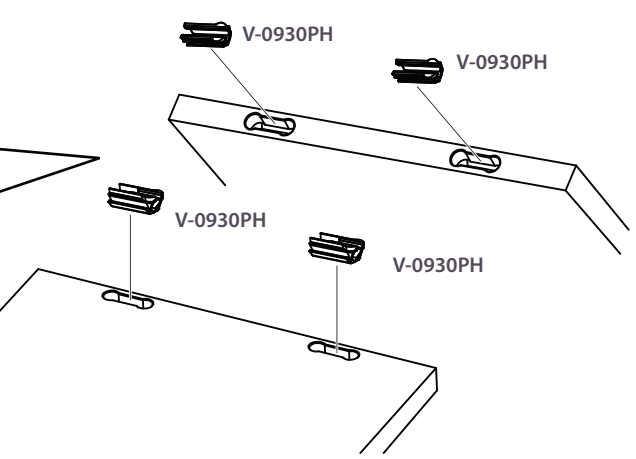
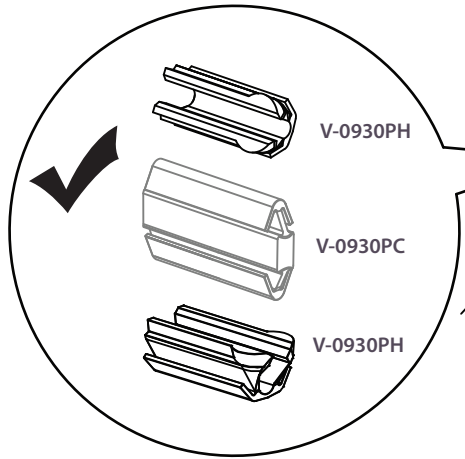
- (a): 35mm to 80mm
- (b): 150mm to 350mm



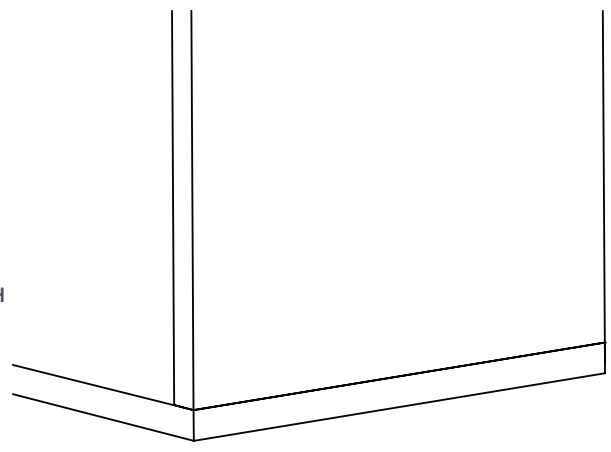
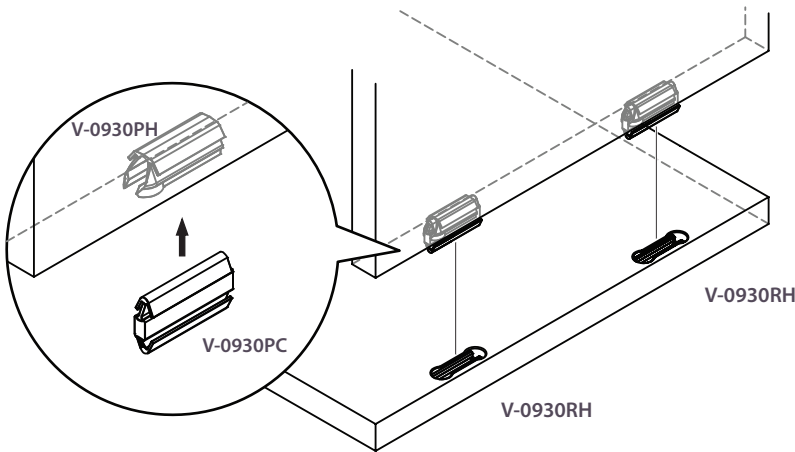
#### Recommended Settings

**Depth:** 9.5mm, +/- 0.5mm  
**Travel Centre to Centre:** 20.6mm  
**Rotation Speed:** CNC speeds vary with different materials. Maximum cutter rotation: 18,000

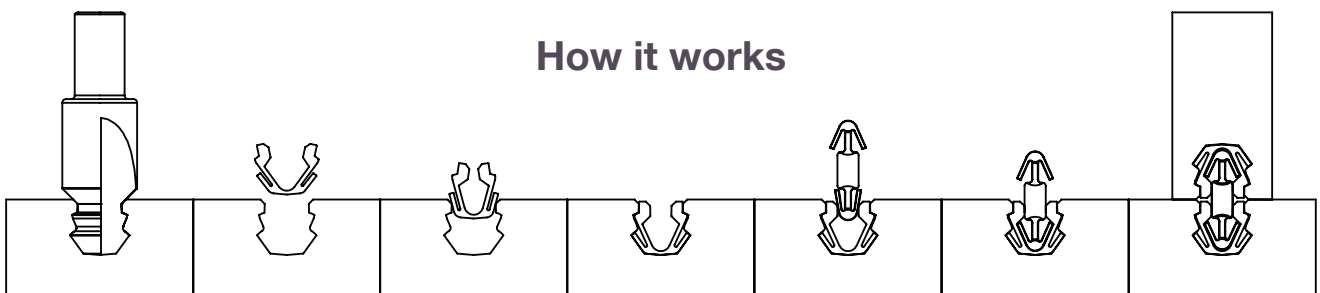
### 2. Housing



### 3. Assembly - Simply push into place to connect



### How it works



# Important! Set Depth Correctly

## OVVO® V Connection System

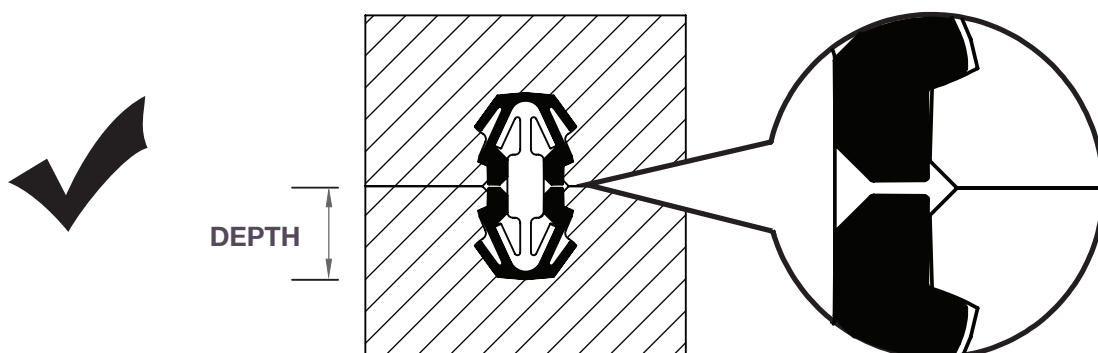


IMPORTANT! MAKE A TEST  
WICHTIG! MACHEN SIE EINEN TEST  
IMPORTANT! FAIRE UN TEST  
IMPORTANTE! FARE UN TEST  
IMPORTANTE! HACER UNA PRUEBA

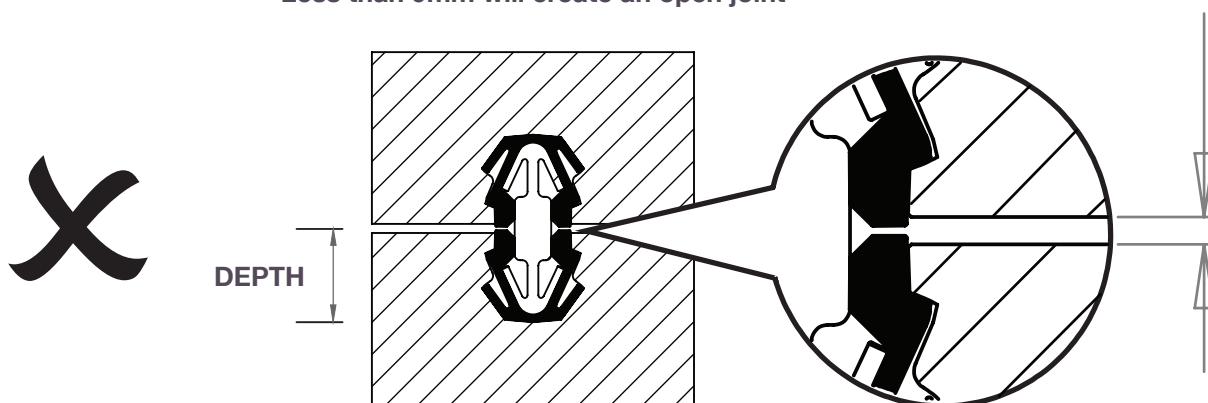
### RECOMMENDED DEPTH TOLERANCES

|        |                  |
|--------|------------------|
| V-0930 | 9.5mm, +/- 0.5mm |
|--------|------------------|

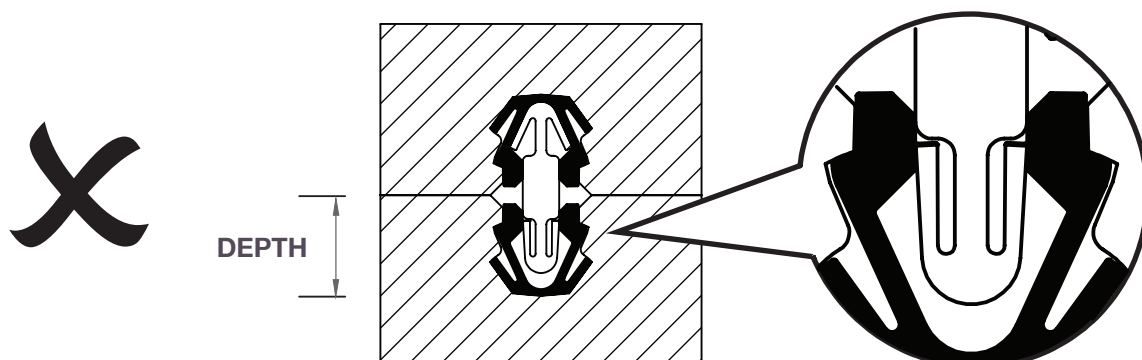
Set the depth tolerance to 9.5mm and adjust +/- 0.5mm if required



Less than 9mm will create an open joint



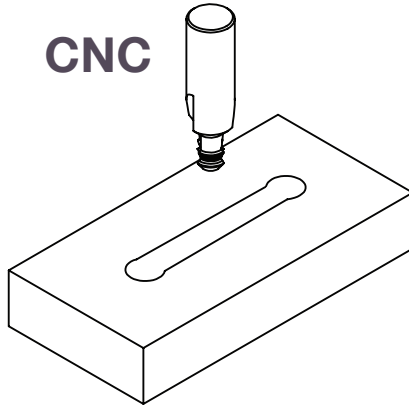
Greater than 10mm connector wing can not lock



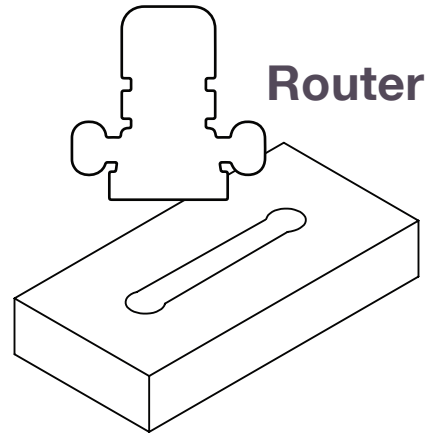
# Depth Setting Guide

## OVVO® V Connection System

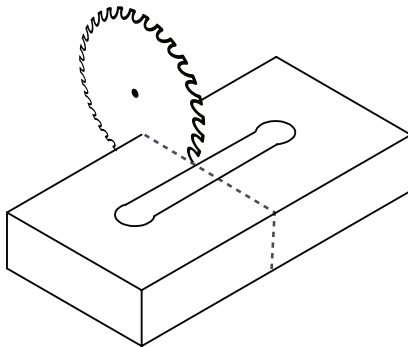
- 1.** Make a long cut with your tooling. Approximately 200mm long and 9.5mm depth



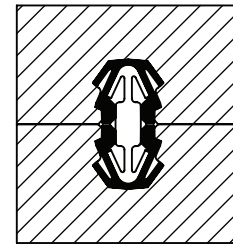
or



- 2.** Cut in half

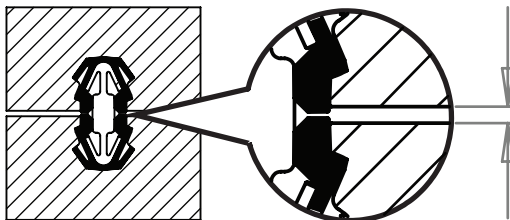


- 3.** Insert Connection Set and check depth.

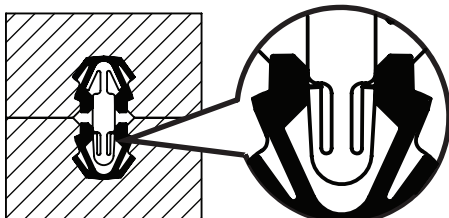


**X** Depth incorrect

Open joint?  
Increase depth.



Wings not locking?  
Reduce depth.



**✓** Depth correct

